

## Recent Home Sale: 15115 INTERLACHEN DR #3-507 - \$285,000



**Remarks** Welcome to The Greens at Leisure World! One of the largest models available with great views and secure parking. Tired of renovating? Move right into this tastefully appointed condominium. A renovated kitchen with stainless steel appliances, quartz countertops and solid maple cabinets is perfectly laid out and has table space with connection to the glass enclosed balcony. A large and bright living room and dining room are cozy, yet situated perfect for a larger guest party. Retreat to the primary suite and you won't be disappointed. A spacious bedroom accompanied by a glass door renovated shower, walk-in closets, and dressing area. Two more bedrooms and another renovated full bath can't be missed. Large foyer and powder room complete this stunning unit. 24 hour security, multiple clubhouses, golf course, tennis courts, fitness center, walking paths, restaurants and more make this community so unique. 55+ years old required.

Rooms	Total	Main
Bedrooms	3	3
Full Baths	2	2
Half Baths	1	1

### Basic Information

**Address** 15115 INTERLACHEN DR #3-507  
**City/Town** SILVER SPRING  
**State** MD  
**Zip Code** 20906  
**County** MONTGOMERY  
**Type** Unit/Flat/Apartment  
**MLS#** MDMC2003722

**Ownership** Condominium  
**Style** Ranch/Rambler  
**Adv Subdivision** GREENS AT LEISURE WORLD  
**DOM-Prop** 73  
**Year Built** 1984  
**Beds** 3

**Baths** 2/1  
**Tax Living Area** 1,530  
**Levels** 1  
**Total Fin Sq Ft** 1,530  
**Contract Date** 2021-09-20  
**Close Date** 2021-10-12  
**Close Price** \$285,000

### Exterior/Construction Features/Utilities

**Exterior** Brick  
**Water Type** Public  
**Sewer** Public Sewer

**Hot Water** Electric  
**Heating** Central  
**Cooling** Central A/C

**Garage Spaces** 1.00

### Tax/Legal Information

**Tax ID #** 161302682612  
**Tax Year** 2021  
**Tax Assessment Value** \$305,000

**Total Taxes** \$3,006  
**Legal Subdiv** GREENS AT LEISURE WORLD  
**County Tax** \$2,958

**Short Sale** No  
**Foreclosure** No  
**REO/Bank Owned** No

### Interior Features/Amenities

**Garage** Covered Parking

### HOA/Condo/Coop Info

**Condo/Coop Fee** \$986

**Amenities** Club House, Common Grounds, Community Center, Elevator, Exercise Room, Extra Storage, Gated Community, Golf Course Membership Available, Party Room, Pool - Indoor, Pool - Outdoor, Security, Tennis Courts

Information Courtesy of Compass. Copyright 2021 Bright MLS. Information is believed to be accurate, but should not be relied upon without verification. Accuracy of square footage, lot size and other information is not guaranteed. This website courtesy of Barbara Ciment, Realtor, Long & Foster Real Estate, Inc.



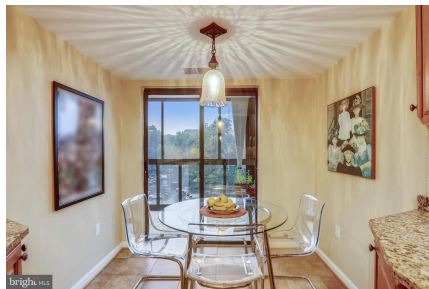
**CIMENT & SHIELDS TEAM**

**Barbara Ciment, Associate Broker**



(C) 301-346-9126 (O) 301-424-0900  
barbara@ciment.com www.ciment.com



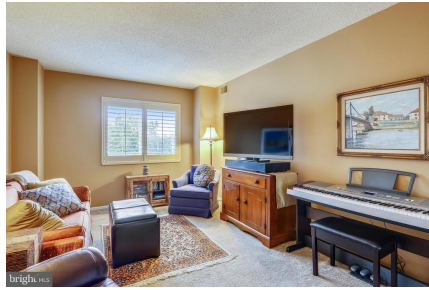


**CIMENT & SHIELDS TEAM**

**Barbara Ciment, Associate Broker**  
**LONG & FOSTER REAL ESTATE**  
(C) 301-346-9126 (O) 301-424-0900  
barbara@ciment.com www.ciment.com





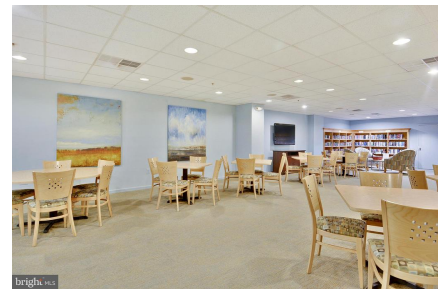
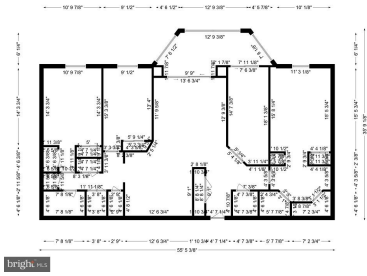
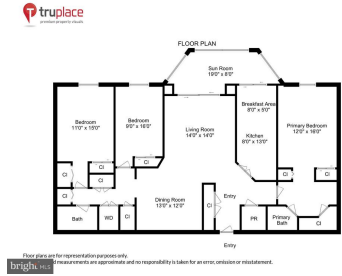


**CIMENT & SHIELDS TEAM**

**Barbara Ciment, Associate Broker**  
**LONG & FOSTER REAL ESTATE**  
**(C) 301-346-9126 (O) 301-424-0900**  
**barbara@ciment.com www.ciment.com**





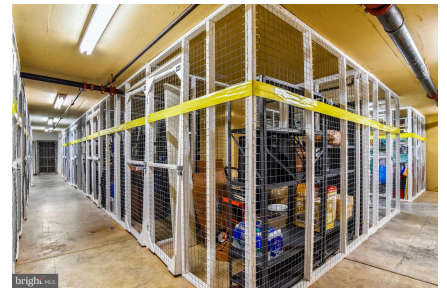
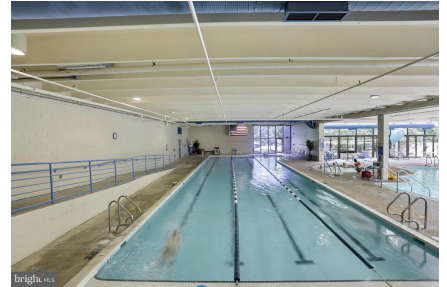


**CIMENT & SHIELDS TEAM**

**Barbara Ciment, Associate Broker**  
**LONG & FOSTER REAL ESTATE**  
 (C) 301-346-9126 (C) 301-424-0900  
 barbara@ciment.com www.ciment.com





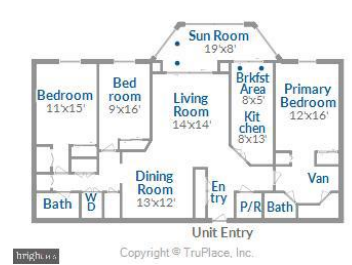
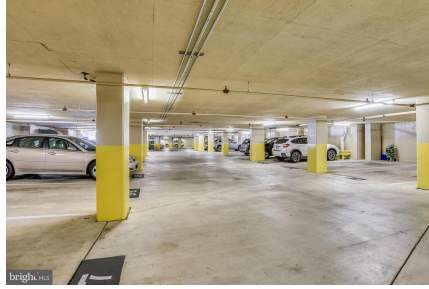


**CIMENT & SHIELDS TEAM**

**Barbara Ciment, Associate Broker**  
**LONG & FOSTER REAL ESTATE**  
REALTOR® EQUAL HOUSING OPPORTUNITY  
(C) 301-346-9126 (O) 301-424-0900  
[barbara@ciment.com](mailto:barbara@ciment.com) [www.ciment.com](http://www.ciment.com)







**CIMENT & SHIELDS TEAM**

**Barbara Ciment, Associate Broker**

**LONG & FOSTER REAL ESTATE**

(C) 301-346-9126 (O) 301-424-0900

barbara@ciment.com www.ciment.com







**CIMENT & SHIELDS TEAM**

**Barbara Ciment, Associate Broker**

**LONG & FOSTER**  
REALTOR® REAL ESTATE

(C) 301-346-9126

(O) 301-424-0900

[barbara@ciment.com](mailto:barbara@ciment.com)

[www.ciment.com](http://www.ciment.com)

